

**Wiring Guide to**

**SOLAR & ELECTRIC**

**DOUBLE GATE**

**OPENER**

**FAILURE TO FOLLOW THESE INSTRUCTIONS MAY  
VOID YOUR WARRANTY**



**Automatic  
Gate System**

# Contents

## WIRING GUIDE TO ELECTRIC & SOLAR DOUBLE GATE OPENER

### CONTENTS

#### **SOLAR SYSTEM**

Step 1 mounting control box .....	3
Step 2 prepare regulator on Z bracket .....	3
Step 3 connect motor wires .....	4
Step 4 mount Z bracket for regulator .....	4
Step 5 mount regulator .....	5
Step 6 connect regulator to control board .....	5
Step 7 secure battery .....	6
Step 8 power up the control board .....	6
Step 9 connect solar cable to regulator .....	7
Pointers & securing control box lid .....	8

#### **ELECTRIC SYSTEM**

Step 1 mounting control box .....	9
Step 2 connect motor wires .....	10
Step 3 connect transformer to control board.....	11
Step 4 secure optional backup battery .....	12
Pointers & securing control box lid .....	17

#### **OTHER ACCESSORY WIRING**

Standard push button wiring .....	14
Key push button wiring .....	15
7 Channel Long range receiver wiring .....	16

**Tip:** Green connector blocks on the main control board can be removed to help with wiring in cables

# Double Solar Wiring

## Solar Gate Opener Wiring

### Step 1

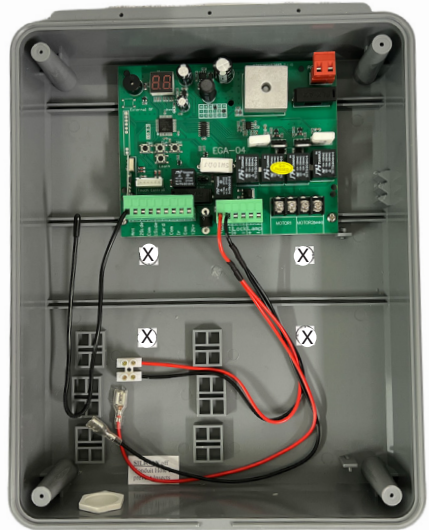
#### Mounting the control box

Install the control box at a suitable location, no further than 1mtr from the master gate.

Use the pre-marked anchor points in the box to secure.

Highly recommend to silicone around these screws to prevent any water seeping into the control box and also preventing insect infestation.

**Do not** drill holes above the computer board as this will allow water in and damage the board.

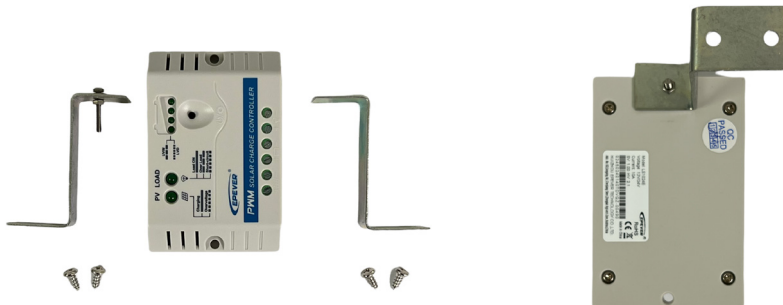


### Step 2

#### Prepare Regulator on Z Bracket

Prepare the regulator by mounting the Z Bracket at the screw hole located near the battery indicator lights with the bolt and nut provided.

**Note:** regulators may differ slightly in appearance to below photos



# Double Solar Wiring

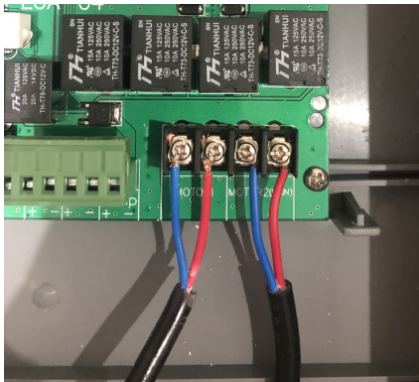
## Step 3

### Connect Motor Wires

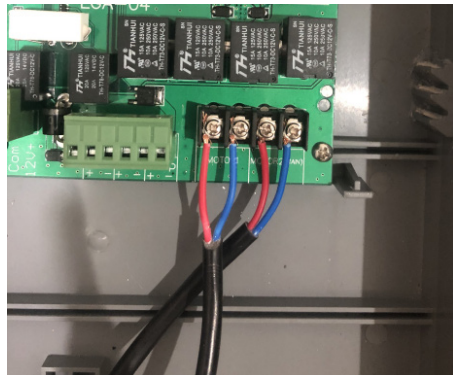
Connect the Motor cables to MOTOR1 and MOTOR2 (MAIN) on to the EGA board. MOTOR2 should be the arm closest to the control box and MOTOR1 should be the slave arm furthest away from the control box.

Ensure no motor wires are visible once screwed into the terminals to prevent any short circuiting from them touching.

**Note:** In the conduit, you should also have 1 wire to the solar panel ready. If the hard wired push button or keypad is to be connected, this wire should also be available



**Gate Direction**  
**Pull to open**  
Blue (left) - Red (right)

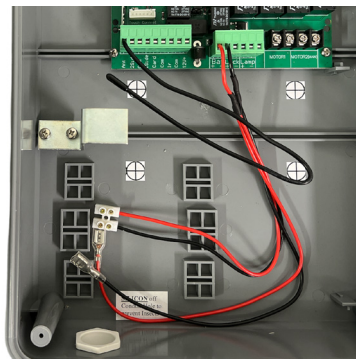


**Gate Direction**  
**Push to open**  
Red (left) - Blue (right)

## Step 4

### Mounting the Z Bracket

Mount 1 Z Bracket onto the ledge in the control panel box as shown

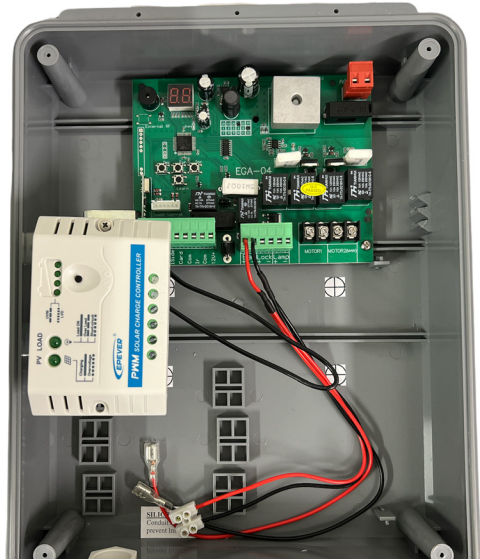


# Double Solar Wiring

## Step 5

### Mounting the Regulator

Mount the regulator onto the second ledge in the control box as shown using the second Z bracket.



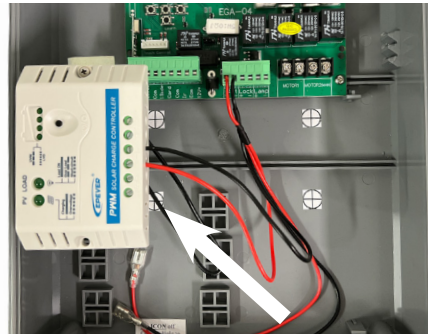
## Step 6

### Connecting the regulator cables

Connect the red and black cable from the EGA control board to the battery terminals of the regulator (you may need to remove these cables from the plastic connector)

Making sure:  
red is to + (positive)  
black is to - (negative)

**Do NOT** connect the cable from the solar panel yet

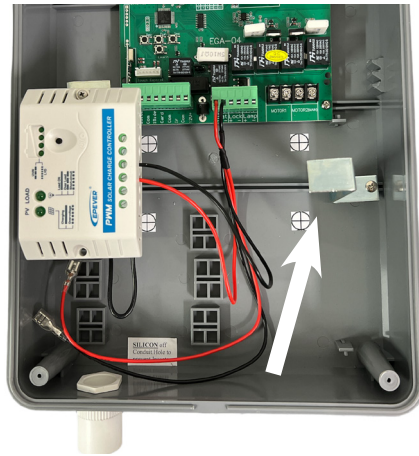


# Double Solar Wiring

## Step 7

Secure the 12 volt battery with the large Z bracket and screws provided

**Caution:** Do not drop the battery



---

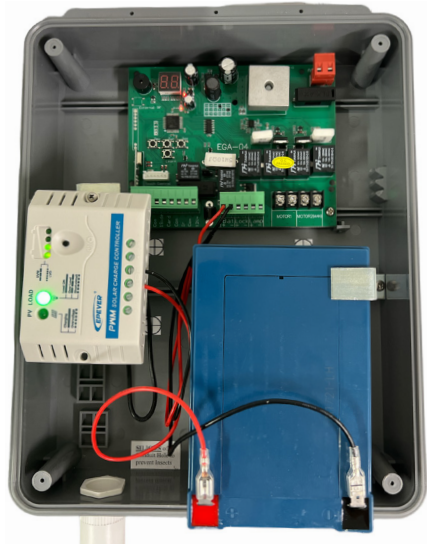
## Step 8

### Power up the EGA control board

Connect the battery cables from the EGA control board to the 12v battery.

Ensure that the red cable is connected to the red terminal and the black cable to the black terminal

**Caution:** Observe Polarity. Wrongly installed polarity will damage the board



# Double Solar Wiring

## Step 9.

Connect the positive and negative cable from the solar panel to the solar regulator terminals as shown in the photo below

Depending on your colour of your solar panel cables:  
(red + | brown + | black - | blue -)

### Caution:

Observe Polarity.

Wrongly installed polarity will damage the regulator.



### Best Solar Panel Angle for all year round

- \* Brisbane 38 °
- \* Sydney 45 °
- \* Melbourne 50 °
- \* Tasmania 56 °
- \* Adelaide 48 °
- \* Darwin 14 °
- \* Perth 43 °
- \* 0 ° being flat and 90 ° being vertical - panel must face FULL NORTH

View page 35 in your Installation & User Manual for the correct setup of your solar panel when installing

### IMPORTANT:

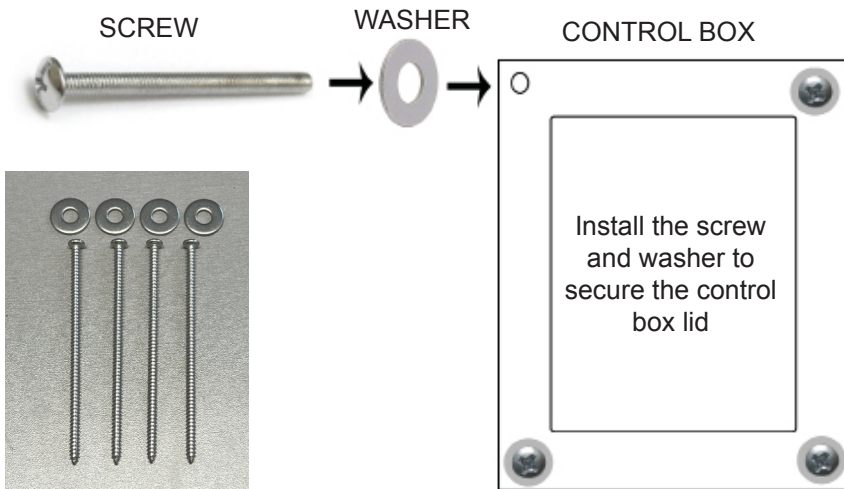
At this point with your actuator arms connected and your battery and solar panel powering the control board, your next step will be running the “Auto Travel Function” which you will find details on in your Installation & User Manual on page 37

SCAN ME - to watch the video ‘teaching the travel function’



# Double Solar Wiring

Attaching your control box lid using the screws & washers provided



Check that the autogate system is operational before closing up the control box.

Auto close will not be active.

Please see main user manual and set auto close after installation is complete.

## Recommendations & notes:

1. Ensure that the mounting points on the control box are properly sealed to prevent water and insects from getting in.
3. Silicone off the conduit hole to prevent insects from getting into the control box via the wire conduits.
4. For solar we highly recommend to charge your battery every 6 - 12 months for 2 hours only on a 12v battery charger to prolong the life of your battery.
5. Additional accessories connected to BMG's swing motors may reduce the batteries performance e.g battery life and/or battery standby capacity during unfavourable conditions.
6. We recommend every 6-12 months to do a thorough check over the complete unit and it's internals to make sure there is no insect infestation and that everything is still in good working order.



# Double Electric Wiring

## Electric Gate Opener Wiring

### Step 1

#### Mounting the control box

Install the control box at a suitable location, no further than 1mtr from the master gate.

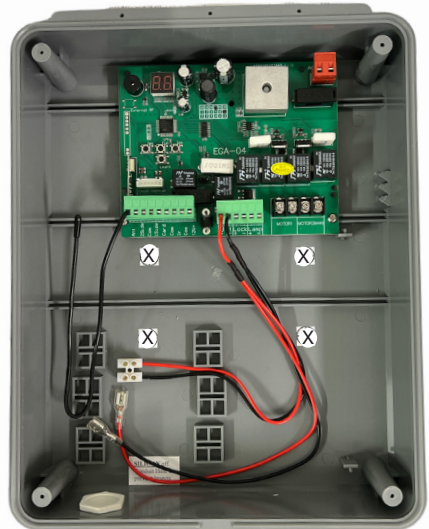
Use the pre-marked anchor points in the box to secure.

Highly recommend to silicone around these screws to prevent any water seeping into the control box and also preventing insect infestation.

**Do not** drill holes above the computer board as this will allow water in and damage the board.

The red and black battery cables from the main control board are for battery back up if required. We recommend a 12v 7ah battery for backup.

The red and black cable that runs to a plastic connector block is for solar only. Leave these wires connected to the plastic connector for the electric kit.



**Tip:** Green connector blocks and brown connector block on the main control board can be removed to help with wiring in cables

# Double Electric Wiring

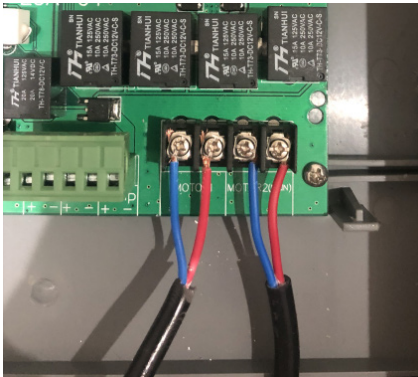
## Step 2

### Connect Motor Wires

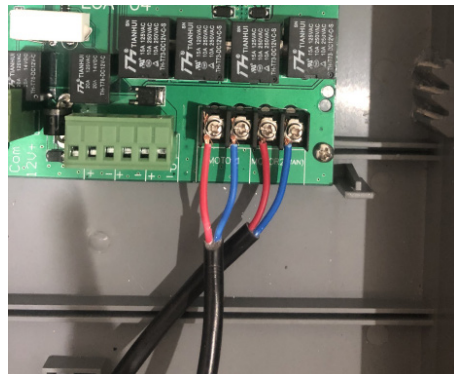
Connect the Motor cables to MOTOR1 and MOTOR2 (MAIN) onto the EGA board. MOTOR2 should be the arm closest to the control box and MOTOR1 should be the slave arm furthest away from the control box.

Ensure no motor wires are visible once screwed into the terminals to prevent any short circuiting from them touching.

**Note:** In the conduit, you should also have 1 wire to the transformer. If a hard wired push button or keypad is to be connected, this wire should also be available



**Gate Direction**  
**Pull to open**  
Blue (left) - Red (right)



**Gate Direction**  
**Push to open**  
Red (left) - Blue (right)

# Double Electric Wiring

## Step 3

### Connect the cable from the transformer

Connect the 2 cables from the transformer **DIRECT** to the EGA control board terminal AC12-16V (located top right hand corner of control board, this connector block can be removed to wire cables in) as shown in the photo below and turn on at the power point.

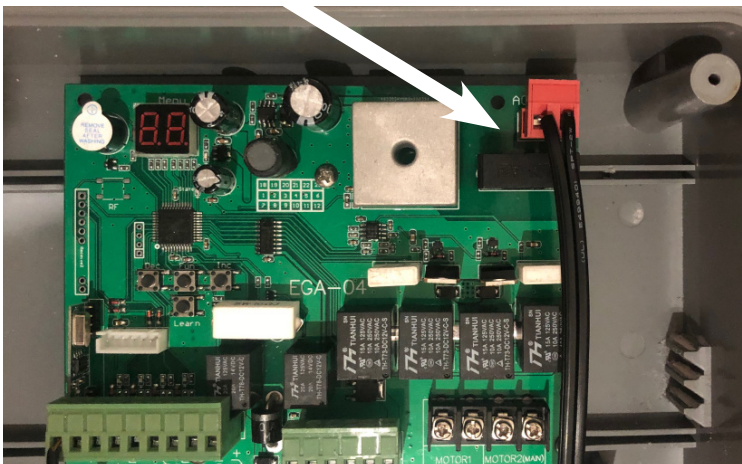
Transformer is not polarity sensitive.

### Caution:

**WARRANTY WILL BE VOID if installed incorrectly**

**DO NOT connect 240volts direct to the gate opener**

**DO NOT hardwire the transformer to 240volt, it must plug into a 240volt power point**



### IMPORTANT:

At this point with your actuator arms connected and the transformer powering the control board, your next step will be running the “Auto Travel Function” which you will find details on in your main Installation & User Manual on page 37

SCAN ME - to watch  
the video ‘teaching the  
travel function’



# Double Electric Wiring

## Step 4 - Optional

### Secure the 12v battery if supplied

Place the battery in the control box with the battery Z bracket supplied

**Caution:** Do not drop the battery



### Power up the board with the backup battery

Connect the battery cables from the EGA control board to the 12v backup battery.

Ensure that the red cable is connected to the red terminal and the black cable to the black terminal

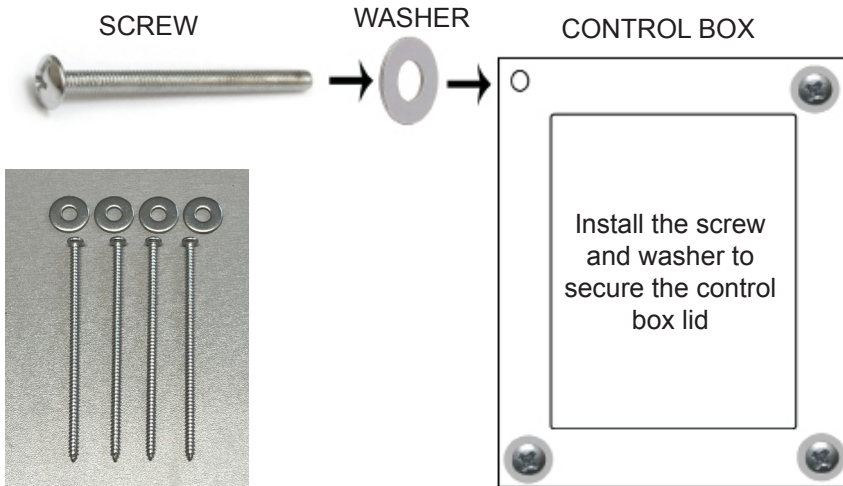
**Caution:** Observe Polarity. Wrongly installed polarity will damage the board

The red and black cable that runs to a plastic connector block is for solar only. Leave these wires connected to the plastic connector for the electric kit.



# Double Electric Wiring

**Attaching your control box lid using the screws provided**



Check that the autogate system is operational before closing up the control box.

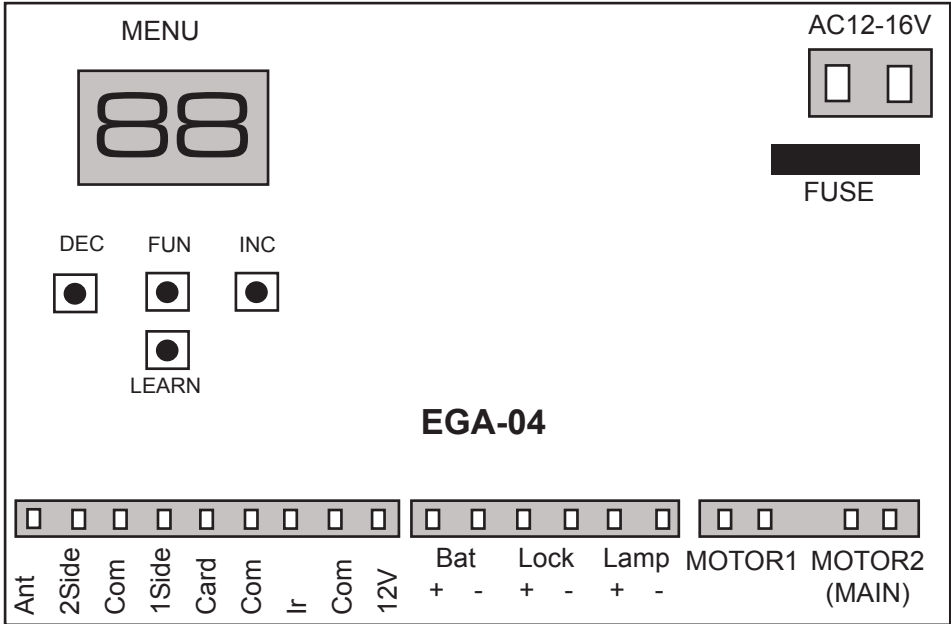
Auto close will not be active.

Please see main user manual and set auto close after installation is complete.

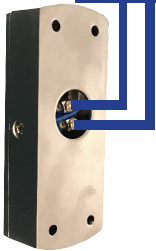
## **Recommendations & notes:**

1. Ensure that the mounting points on the control box are properly sealed to prevent water and insects from getting in.
2. All cabling must go through the entry hole located at the bottom of the control box.
3. Silicone off the conduit hole to prevent insects from getting into the control box via the wire conduits.
4. For solar we highly recommend to charge your battery every 6 - 12 months for 2 hours only on a 12v battery charger to prolong the life of your battery.
5. Additional accessories connected to BMG's swing motors may reduce the batteries performance e.g battery life and/or battery standby capacity during unfavourable conditions.
6. We recommend every 6-12 months to do a thorough check over the complete unit and it's internals to make sure there is no insect infestation and that everything is still in good working order.

# WIRING FOR STANDARD PUSH BUTTON



2SIDE for a double swing gate setup

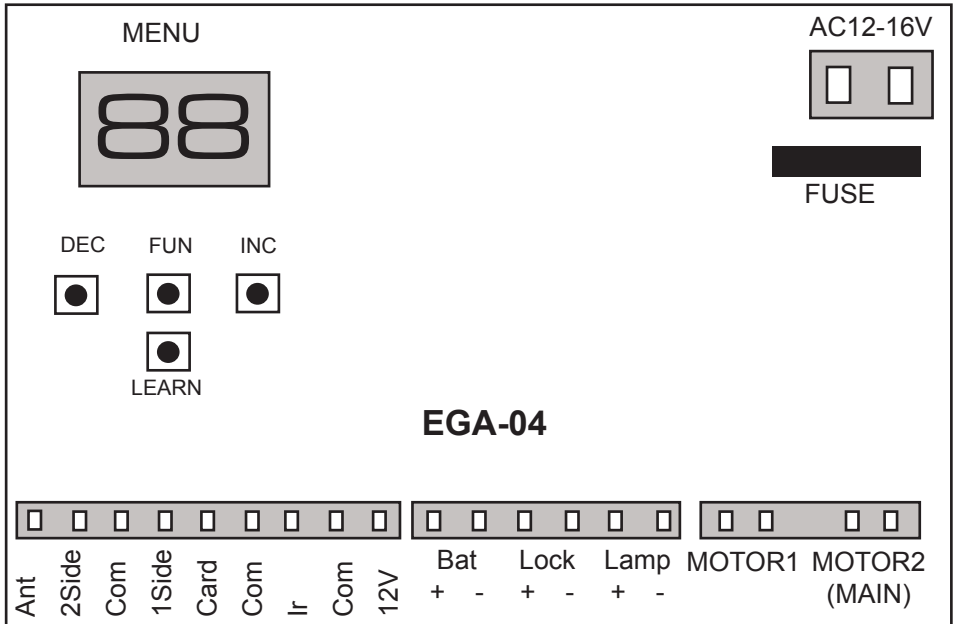


DRY CONTACT

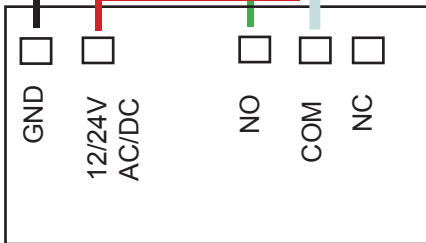
**Tip:** Green connector blocks on the main control board can be removed to help with wiring in cables



# WIRING FOR 7 CHANNEL LONG RANGE RECEIVER



2SIDE for a double swing gate setup



LONG RANGE 7 CHANNEL RECEIVER



**Tip:** Green connector blocks on the main swing control board can be removed to help with wiring in cables